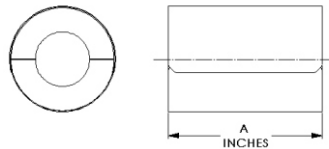




# MODEL A9000 Insulated Pipe Support Heavy Duty for use with rod hangers



Hardware sold separately  
 Note: For higher load ratings, see D1000, D3000

The load ratings represent average values obtained in accordance with accepted methods and are subject to normal manufacturing variations. Dimensions and ratings are subject to change without notice.

To develop maximum load rating use band, ring or clevis hanger with manufacturer's load rating equal to or greater than values shown in Table I.

Pipe Size	MAXIMUM LOAD RTG. (LBS)
	In Ring or Clevis Hanger (a)
1/2	50
3/4	55
1	80
1 1/4	100
1 1/2	130
2	175
2 1/2	250
3	300
3 1/2	350
4	400
5	550
6	600
8	900
10	1200
12	1450
14	1650
16	1900
18	2150
20	2400
24	2750

TABLE I

Contact factory for other dimensions, temperatures, loads.  
 Available in all insulation thicknesses.

Iron Pipe Size	Insulation Thickness																Copper Tubing Size O.D.			
	1/2		3/4		1		1 1/2		2		2 1/2		3		3 1/2			4		
	A	B	A	B	A	B	A	B	A	B	A	B	A	B	A	B		A	B	
1/2 - 1 1/2	4	24	4	24	4	24	4	24	4	24	4	24	6	24	6	24	6	24	5/8-1 5/8	
2	6	24	6	24	6	24	6	24	6	24	6	24	6	24	6	24	6	24	2 1/8	
2 1/2 - 4	6	20	6	20	6	20	6	20	6	20	6	20	9	20	9	20	9	20	2 5/8 - 4 1/8	
5					6	20	6	20	6	20	6	20	9	20	9	20	9	20	5 1/8	
6 - 7					6	20	6	20	6	20	6	20	9	16	9	16	9	16	6 1/8	
8 - 10								9	16	9	16	9	16	9	16	9	16	9	16	8 1/8 - 10 1/8
12 - 18								12	16	12	16	12	16	12	16	12	16	12	16	12 1/8
20 - 24								18	16	18	16	18	16	18	16	18	16	18	16	

TABLE II "B" = gauge of sheet metal jacket (bottom jacket approx. 2 X ga. of top jacket)

**Application :**

Model A9000 is designed for use on :

- Hot Water
- Cold Water
- Chilled Water
- Dual Temperature
- Vacuum
- Steam
- Air
- Gas

Intended for installation on:

- Band, ring or clevis pipe hangers
- Flat surfaces, see A7000
- Pipe rolls, see A8000

Temperature Range: +40°F to +1200°F  
 Note: Up to 1700°F available upon request.

**Features:**

- Compact
- Easy Installation
- Eliminates welding to pipe
- Overlapping galvanized sheet metal jacket
- Minimizes heat-loss and/or condensation
- Insulating structural inserts for load transfer
- Copper Tubing available
- Other I.D.'s and/or O.D.'s available on request

Performance Test Results on File:  
 Available upon request.

**Material Data:**

- A9000: Applicable PSI spec. doc.: No. 205.
- Insulation: Calcium Silicate asbestos-free, treated with water repellent.
- Jackets: Galvanized Steel ASTM A-527.
- Structural Inserts: High-density calcium silicate asbestos-free, treated with water repellent.
- Glue: Industrial contact adhesive.

Formal Submittal Sheets available