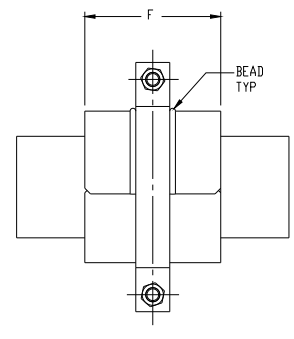
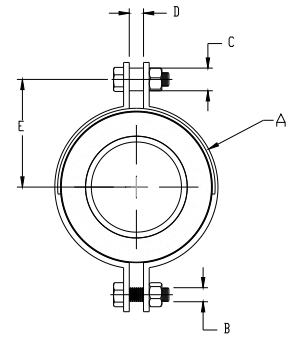
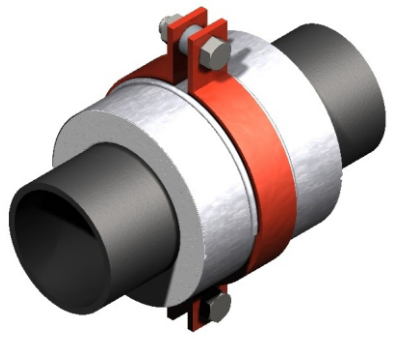




MODEL D3200 Insulated 2-Bolt Hanger



The load ratings represent average values obtained in accordance with accepted test methods and are subject to normal manufacturing variations. Dimensions and ratings are subject to change without notice. Contact factory for current information.

Note: For higher load ratings, see: D3300

Pipe Size	(a) load lbs.	A	B	C	D	Insul. Thk 1"		Insul. Thk 2"		Insul. Thk 3"		Insul. Thk 4"		Insul. Thk 5"	
						E	F	E	F	E	F	E	F	E	F
						1	850	1/4x4 1/2	0.625	1.05	0.75	3.19	9	4.22	9
1 1/2	1215	1/4x4 1/2	0.625	1.05	0.75	3.44	9	4.75	9	5.75	9	6.81	9	7.81	9
2	1215	1/4x4 1/2	0.625	1.05	0.75	3.69	9	4.75	9	5.75	9	6.81	9	7.81	9
2 1/2	1215	1/4x4 1/2	0.625	1.05	0.75	3.94	9	5.25	9	6.25	9	7.31	9	8.44	9
3	1805	3/8x4 1/2	0.625	1.05	0.75	4.47	9	5.5	9	6.5	9	7.56	9	8.69	9
4	2585	3/8x4 1/2	0.75	1.05	0.75	5.13	9	6.13	9	7.19	9	8.19	9	9.31	9
5	2705	1/2x4 1/2	0.75	1.05	0.75	5.88	9	6.88	9	7.94	9	9.06	9	10.06	9
6	3750	1/2x4 1/2	0.875	1.315	1	6.5	9	7.56	9	8.56	9	9.69	9	10.69	9
8	4215	1/2x5	1	1.315	1	7.81	9	8.81	9	9.94	9	10.94	9	11.94	9
10	6045	5/8x5	1.25	1.66	1.25	9.06	9	10.19	9	11.19	9	12.19	9	13.19	9
12	7770	3/4x5	1.25	1.66	1.25	10.44	9	11.44	9	12.44	9	13.44	9	14.44	9
14	7770	3/4x5	1.25	1.66	1.25	10.94	9	11.94	9	12.94	9	13.94	9	14.94	9
16	7970	1x5	1.25	1.66	1.25	12.44	9	13.44	9	14.44	9	15.44	9	16.44	9
18	11270	1x5	1.5	1.9	1.25	13.69	9	14.69	9	15.69	9	16.69	9	17.69	9
20	11465	1x6	1.5	1.9	1.25	14.69	9	15.69	9	16.69	9	17.69	9	18.69	9
24	12220	1x6	2	2.375	1.75	17.06	9	18.06	9	19.06	9	20.06	9	21.06	9
30	16480	1 1/4x6	2	2.375	1.75	20.69	9	21.69	9	22.69	9	23.69	9	24.69	9
36	17370	1 1/4x8	2	2.375	1.75	23.69	12	24.69	12	25.69	12	26.69	12	27.69	12
42	17370	1 1/4x8	2	2.375	1.75	26.69	12	27.69	12	28.69	12	29.69	12	30.69	12

TABLE I

Application:

Model D3300 is designed for use on:

- Hot Water
- Cold Water
- Dual Temperature
- Vacuum
- Steam
- Chilled Water
- Gas
- Air

Intended to be hung from threaded rod

Temperature Range:
+40°F to +1200°F

Features:

- Compact
- Easy installation
- Eliminates welding to pipe
- Copper tubing sizes and pipe sizes
- Overlapping galvanized sheet metal jacket
- Minimizes heat-loss and/or condensation
- Other I.D.'s and/or O.D.'s available on request

Performance Test Results on File:
Available upon request.

Material Data:

- D3200: Applicable PS I specification document: No. 209.
- Insulation: Calcium silicate asbestos-free, treated with water repellent.
- Jackets: Galvanized Steel ASTM A-527.
- Glue: Industrial contact adhesive
- Structural Inserts: High-density calcium silicate asbestos free, treated with water repellent.
- Steel Straps: Carbon Steel ASTM A-36.
- Fasteners: ASTM A-307 plated.
- Coating: Primer coated or hot dipped galvanized. Other coatings available upon request.

Formal Submission Sheets available.