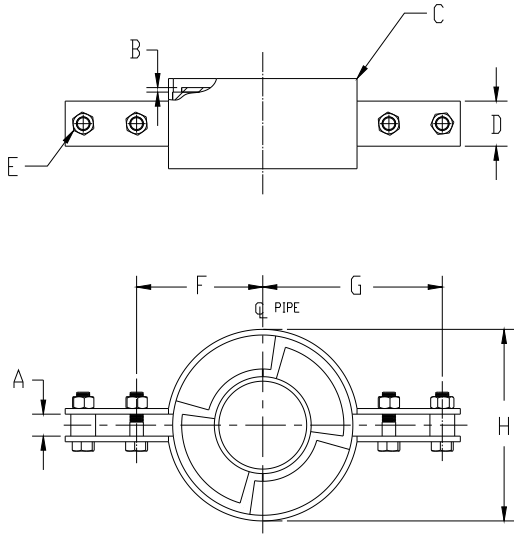
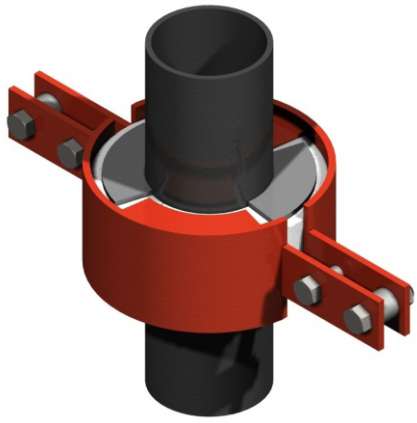




**MODEL E2200, MODEL E2210,
MODEL E2220, MODEL E2230**

**Insulated Pipe Riser Clamps
for Upward or Downward Loads**



a. If thrust plate thickness "B" is greater than pipe wall thickness, consult factory.

b. One pair thrust plates supplied loose for field welding, top and bottom.

Note: For higher load ratings, see: E2200

Pipe Size	Load lbs	A	B	C	D	E	Insul. Thk. = 1"			Insul. Thk. = 2"			Insul. Thk. = 3"			Insul. Thk. = 4"		
							F	G	H	F	G	H	F	G	H	F	G	H
2	500	0.63	0.38	0.38 x 3.00	1.50	0.625	3.94	6.19	5.38	5.00	7.25	7.5	6.00	8.25	9.5	7.06	9.31	11.63
2 1/2	600	0.63	0.38	0.38 x 3.00	1.50	0.625	4.19	6.44	5.88	5.50	7.75	8.5	6.50	8.75	10.5	7.56	9.81	12.63
3	800	0.63	0.38	0.38 x 3.00	1.50	0.625	4.47	6.72	6.44	5.50	7.75	8.5	6.50	8.75	10.5	7.56	9.81	12.63
4	1200	0.63	0.38	0.38 x 3.00	1.50	0.625	5.00	7.25	7.5	6.00	8.25	9.5	7.06	9.31	11.63	8.06	10.31	13.63
5	1600	0.63	0.38	0.38 x 4.00	2.00	0.625	5.50	7.75	8.5	6.50	8.75	10.5	7.56	9.81	12.63	8.69	10.94	14.88
6	2000	0.63	0.38	0.38 x 4.00	2.00	0.625	6.00	8.25	9.5	7.06	9.31	11.63	8.06	10.31	13.63	9.19	11.44	15.88
8	2600	0.63	0.50	0.50 x 4.00	2.00	0.625	7.31	9.81	11.88	8.31	10.81	13.88	9.44	11.94	16.13	10.44	12.94	18.13
10	3200	0.88	0.50	0.50 x 5.00	3.00	0.625	8.31	10.81	13.88	9.44	11.94	16.13	10.44	12.94	18.13	11.44	13.94	20.13
12	3400	0.88	0.50	0.50 x 5.00	3.00	0.625	9.44	11.94	16.13	10.44	12.94	18.13	11.44	13.94	20.13	12.44	14.94	22.13
14	4000	0.88	0.50	0.50 x 5.00	3.00	0.75	10.06	12.69	17.13	11.06	13.69	19.13	12.06	14.69	21.13	13.06	15.69	23.13
16	4600	0.88	0.50	0.50 x 6.00	4.00	0.75	11.06	13.69	19.13	12.06	14.69	21.13	13.06	15.69	23.13	14.06	16.69	25.13
18	5000	0.88	0.50	0.50 x 6.00	4.00	0.75	12.06	14.69	21.13	13.06	15.69	23.13	14.06	16.69	25.13	15.06	17.69	27.13
20	5400	0.88	0.50	0.50 x 6.00	4.00	0.75	13.06	15.69	23.13	14.06	16.69	25.13	15.06	17.69	27.13	16.06	18.69	29.13
24	5600	0.88	0.50	0.50 x 6.00	4.00	0.75	15.06	17.69	27.13	16.06	18.69	29.13	17.06	19.69	31.13	18.06	20.69	33.13

Application:
 Model E 2200 through E2 230 is designed for use on:
 · Hot Water · Vacuum · Gas
 · Cold Water · Steam · Air
 · Dual Temperature · Chilled Water
Intended for installation on:
 · Vertical runs of insulated pipe with upward and/or downward load.
Other:
 · For handling downward loads only, see E1 200
Temperature Range:
 +40°F to +650°F

Features:
 · All pipe sizes
 · Easy Installation
 · Positive stop - axially upward or downward
 · May be supported from below or above
 · Overlapping galvanized sheet metal jacket
 · Insulating structural inserts for load transfer
 · Other I.D.'s and/or O.D.'s Available on Request
 · Eliminates condensations sweating on chilled water risers

Performance Test Results on File:
 Available upon request

Material Data:
 · E 2200 - E 2230: specification document: No. 206.
 · Steel Inner Thrust Plates:

<u>Model</u>	<u>ASTM</u>	<u>For Pipe Material</u>
E 2200	A36	Carbon-Steel
E 2210	A387GR. 11	Chrome-Moly
E 2220	A515GR. 70	Carbon Silicon
E 2230	A304L	Stainless Steel

 · Insulation: Calcium Silicate asbestos-free, treated with water repellent.
 · Jackets: Galvanized Steel ASTM A-527.
 · Glue: Industrial contact adhesive
 · Structural Inserts: High-density calcium silicate asbestos free, treated with water repellent.
 · Steel Straps/Base: Carbon Steel ASTM A-36.
 · Fasteners: ASTM A-307 plated.
 · Coating: Primer coated or hot dipped galvanized.
 Other coatings available upon request.
 Formal Submittal Sheets available.