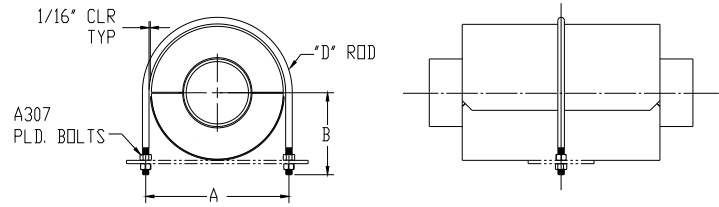
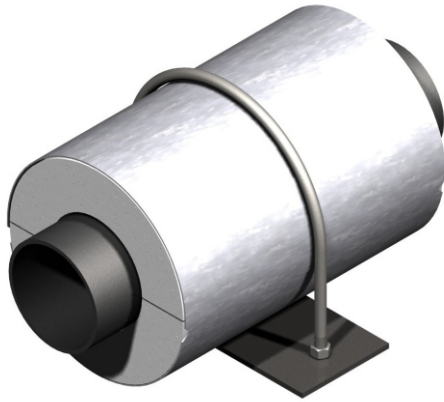




# MODEL G3000 Pipe Guide U-Bolt Shield Guide U-Bolt



Insulation and Plate sold separately.

Contact factory for pipe, tube sizes, or insulation thicknesses not shown.

Note: For pipe clamps, see: G1000, G1200, G2000, G2200; For shield clamps, see: G1000; For shield guide straps, see: G2000

| Pipe Size | Maximum Lateral Load-Lbs | Thread | Insulation Thickness |      |      |      |      |      |      |      |       |      |      |      |       |      |       |      |       |      |
|-----------|--------------------------|--------|----------------------|------|------|------|------|------|------|------|-------|------|------|------|-------|------|-------|------|-------|------|
|           |                          |        | BARE                 |      | 1/2  |      | 3/4  |      | 1    |      | 1-1/2 |      | 2    |      | 2-1/2 |      | 3     |      | 4     |      |
|           |                          |        | A                    | B    | A    | B    | A    | B    | A    | B    | A     | B    | A    | B    | A     | B    | A     | B    | A     | B    |
| 1/2       | 50                       | 1/4-20 | 1.25                 | 2.75 | 2.5  | 3.38 | 2.88 | 3.63 | 3.38 | 3.88 | 4.5   | 4.38 | 5.5  | 4.88 | 7.13  | 5.88 | 8.13  | 6.25 | 10.13 | 7.25 |
| 3/4       | 50                       | 1/4-20 | 1.5                  | 3    | 2.5  | 3.38 | 2.88 | 3.63 | 3.38 | 3.88 | 4.5   | 4.38 | 5.5  | 4.88 | 7.13  | 5.88 | 8.13  | 6.25 | 10.13 | 7.25 |
| 1         | 50                       | 1/4-20 | 1.75                 | 3    | 2.88 | 3.63 | 3.38 | 3.88 | 4    | 4.25 | 5     | 4.63 | 6.25 | 5.25 | 7.13  | 5.88 | 8.13  | 6.25 | 10.13 | 7.25 |
| 1-1/4     | 50                       | 3/8-16 | 2.25                 | 3.5  | 3.38 | 4.13 | 3.38 | 4.13 | 4.13 | 4.38 | 5.63  | 5.13 | 6.25 | 5.5  | 7.25  | 6    | 8.25  | 6.50 | 10.25 | 7.50 |
| 1-1/2     | 50                       | 3/8-16 | 2.5                  | 3.63 | 3.5  | 4.13 | 4.13 | 4.38 | 4.63 | 4.63 | 5.63  | 5.13 | 7.25 | 6    | 8.25  | 6.5  | 9.25  | 7.00 | 11.25 | 8.00 |
| 2         | 50                       | 3/8-16 | 2.88                 | 3.88 | 4.13 | 4.38 | 4.63 | 4.63 | 5.13 | 4.88 | 6.25  | 5.5  | 7.25 | 6    | 8.25  | 6.5  | 9.25  | 7.00 | 11.25 | 8.00 |
| 2-1/2     | 50                       | 1/2-13 | 3.5                  | 4.38 | 4.88 | 4.88 | 5.38 | 5.13 | 5.88 | 5.38 | 7.5   | 6.25 | 8.5  | 6.75 | 9.5   | 7.25 | 10.50 | 7.75 | 12.50 | 8.75 |
| 3         | 50                       | 1/2-13 | 4.13                 | 4.63 | 5.38 | 5.13 | 5.88 | 5.38 | 6.38 | 5.63 | 7.5   | 6.25 | 8.5  | 6.75 | 9.5   | 7.25 | 10.50 | 7.75 | 12.50 | 8.75 |
| 3-1/2     | 50                       | 1/2-13 | 4.63                 | 4.88 | 5.88 | 5.38 | 6.38 | 5.75 | 7.5  | 6.25 | 8.5   | 6.75 | 9.5  | 8.63 | 10.5  | 7.75 | 11.50 | 8.25 | 13.50 | 9.25 |
| 4         | 50                       | 1/2-13 | 5.13                 | 5.13 | 6.38 | 5.75 | 7.5  | 6.25 | 7.5  | 6.25 | 8.5   | 6.75 | 9.5  | 8.63 | 10.5  | 7.75 | 11.50 | 8.25 | 13.50 | 9.25 |

TABLE I

|  |   |  |
|--|---|--|
| <p><b>Application:</b></p> <p>Model G 3000 is designed for use on:</p> <ul style="list-style-type: none"> <li>· Hot Water</li> <li>· Cold Water</li> <li>· Chilled Water</li> <li>· Dual Temperature</li> <li>· Steam</li> <li>· Air</li> <li>· Gas</li> <li>· Vacuum</li> </ul> | <p><b>Features:</b></p> <ul style="list-style-type: none"> <li>· Easy installation</li> <li>· Sized to provide a approximately 1/16" to 1/8" radial clearance around O.D. of bare pipe or insulated pipe</li> <li>· Support models A1000 through A7000</li> <li>· Complete with 4 hex nuts and 4 plain washers</li> <li>· Other sizes available on request</li> </ul> | <p><b>Material Data:</b></p> <ul style="list-style-type: none"> <li>· G 3000: Applicable PS Specification document: No.208</li> <li>· Steel: Low carbon threaded rod.</li> <li>· Hex Nuts: ASTM A-563 Gr. A.</li> <li>· Coating: Primer coating or hot dipped galvanized. Other coatings available upon request.</li> </ul> <p>Formal Submittal Sheets available</p> |
|--|---|--|