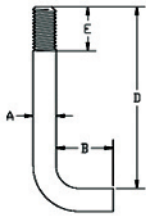




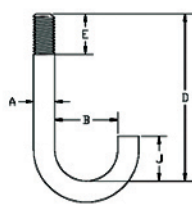
ANCHOR BOLTS

MATERIAL: Carbon steel
FINISH: Black, galvanized or painted.
ORDERING: Order by type, finish, dimensions, nuts and washers if required.

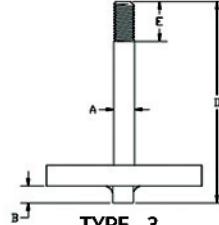
Example:
 100 pcs. type 2 anchor bolt with one hex nut and one plain washer:
 A = 1", D = 24", B = 6", J = 8", E = 3"



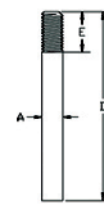
TYPE - 1



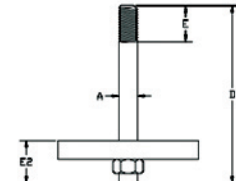
TYPE - 2



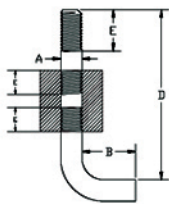
TYPE - 3



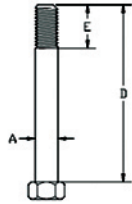
TYPE - 4



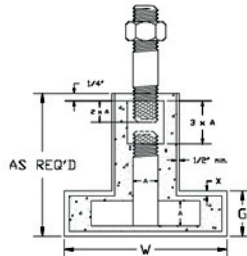
TYPE - 5



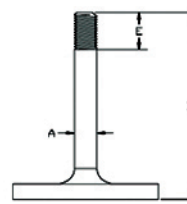
TYPE - 6



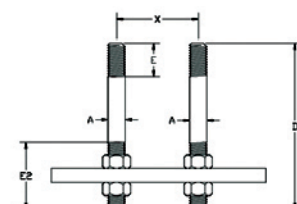
TYPE - 7



TYPE - 8



TYPE - 9



TYPE - 10

FLOW PRODUCTS

FLAME CUTTING, MACHINING AND FABRICATING

MATERIAL: Carbon steel, stainless steel, alloy steel
ORDERING: Line size, rating, drawing, material, etc.

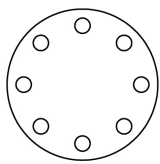
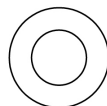
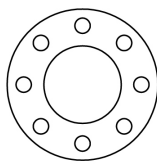
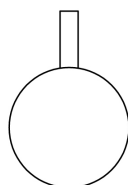
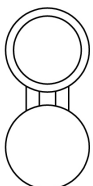
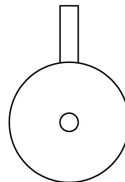


PLATE FLANGES



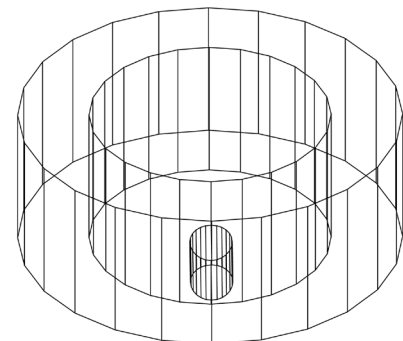
ORIFICE PLATES



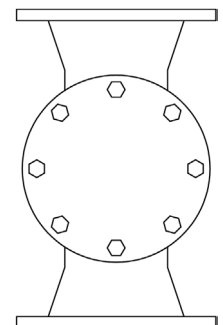
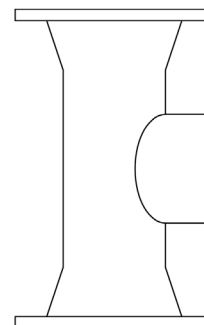
LINE BLINDS



BELLMOUTH REDUCER



BLEED RINGS



Y-STRAINERS