

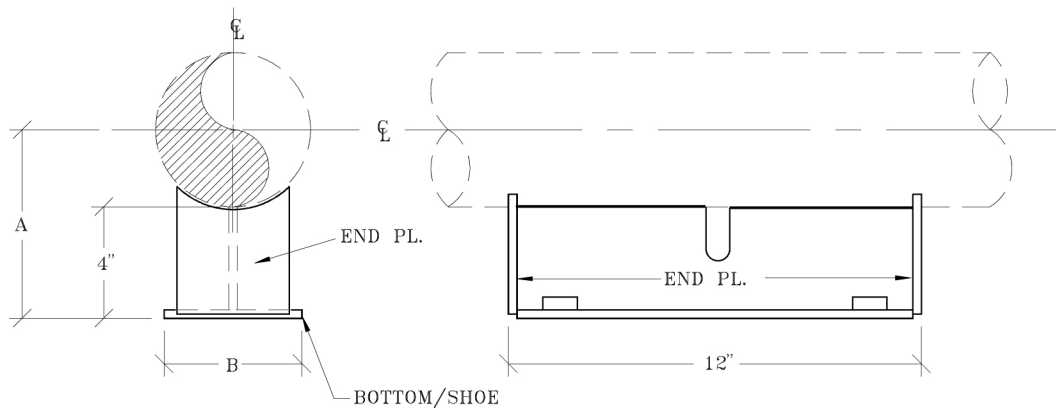


FIG. 100

T-BAR CRADLE SUPPORT & STRUCTURAL ANCHOR CRADLED NON-GUIDED SUPPORT

www.pipingtech.com/fig100

- MATERIAL:** Carbon steel
- FINISH:** Painted or hot dipped galvanized.
- OPTIONS:** Modifications in the dimensions A & B are available upon request.
- ORDERING:** Specify pipe size, figure number, description, type, quantity, finish and slide plate material.
- ALLOWABLE LOADS:** The allowable vertical load depends upon the pipe pressure and wall thickness.



PIPE SIZE	A	B	MAX. ANCHOR FORCE (lb.)	APPROX. WEIGHT (lb. per each)
2	5 3/16	4	12,000	8.0
3	5 3/4	4	15,000	8.0
4	6 1/4	4	18,000	8.0
6	7 5/16	4	18,000	12.0
8	8 5/16	4	24,000	12.3
10	9 3/8	4	29,000	12.3
12	10 3/8	4	30,000	14.0
14	11	4	34,000	17.2
16	12	4	38,000	18.2
18	13	7	41,000	27.2
20	14	7	41,000	28.0
24	16	7	47,000	30.4

PIPESHOES01.XLS-07/17/09