



**FIG. 2**

## ADJUSTABLE BAND HANGER

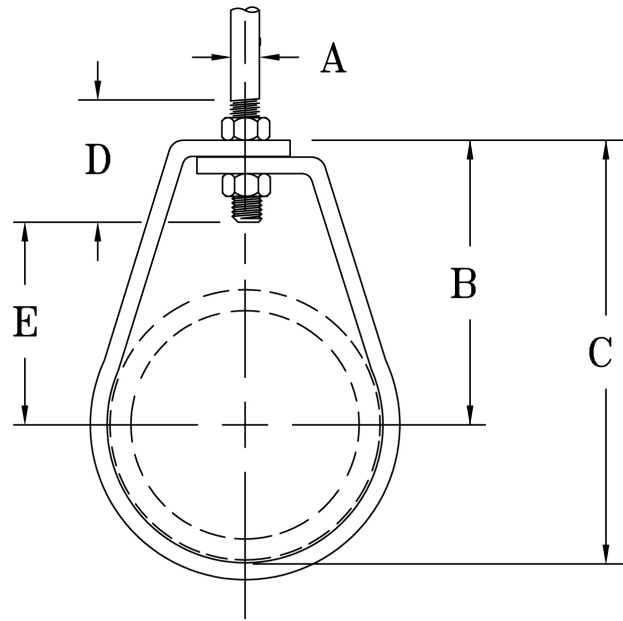
[www.pipingtech.com/fig2](http://www.pipingtech.com/fig2)

**Adjustable band hanger is formed in one piece.**

**ADJUSTMENT:** This hanger provides for a vertical adjustment of 1" to 2" with the pipe and hanger in position. A temporary support is not required while adjustment is being made.

**FINISH:** Hangers can be furnished galvanized. Specify when ordering.

**ORDERING:** Specify pipe size, figure number and description.



SUPPORT ASSEMBLY COMPONENTS

PIPE SIZE	A	B	C	D	E	WGT. / C APPROX.	MAX. RECOM. LOAD (lb.)
1/2	3/8	1 13/16	2 5/16	2 1/2	1 1/8	10	610
3/4	3/8	2 1/16	2 5/8	2 1/2	1 5/16	14	610
1	3/8	2 3/16	2 7/8	2 1/2	1 7/16	15	610
1 1/4	3/8	2 9/16	3 7/16	2 1/2	1 13/16	18	610
1 1/2	3/8	2 3/4	3 11/16	2 1/2	1 15/16	23	610
2	3/8	3	4 3/16	2 1/2	2 3/16	24	610
2 1/2	1/2	3 7/8	5 5/16	3 1/2	3	35	970
3	1/2	4 1/4	6	3 1/2	3 5/16	36	970
3 1/2	1/2	4 1/2	6 1/2	3 1/2	3 9/16	37	970
4	5/8	4 7/8	7 1/8	4	3 13/16	84	1,250
5	5/8	5 11/16	8 7/16	4	4 5/8	93	1,250
6	3/4	6 3/8	9 11/16	4 1/2	5 3/16	171	1,600
8	7/8	7 9/16	11 7/8	4 1/2	6 3/16	271	1,800
10	7/8	8 5/8	14 3/16	4 1/2	6 3/16	319	1,800
12	7/8	9 5/8	16 1/4	4 1/2	6 3/16	478	1,800