

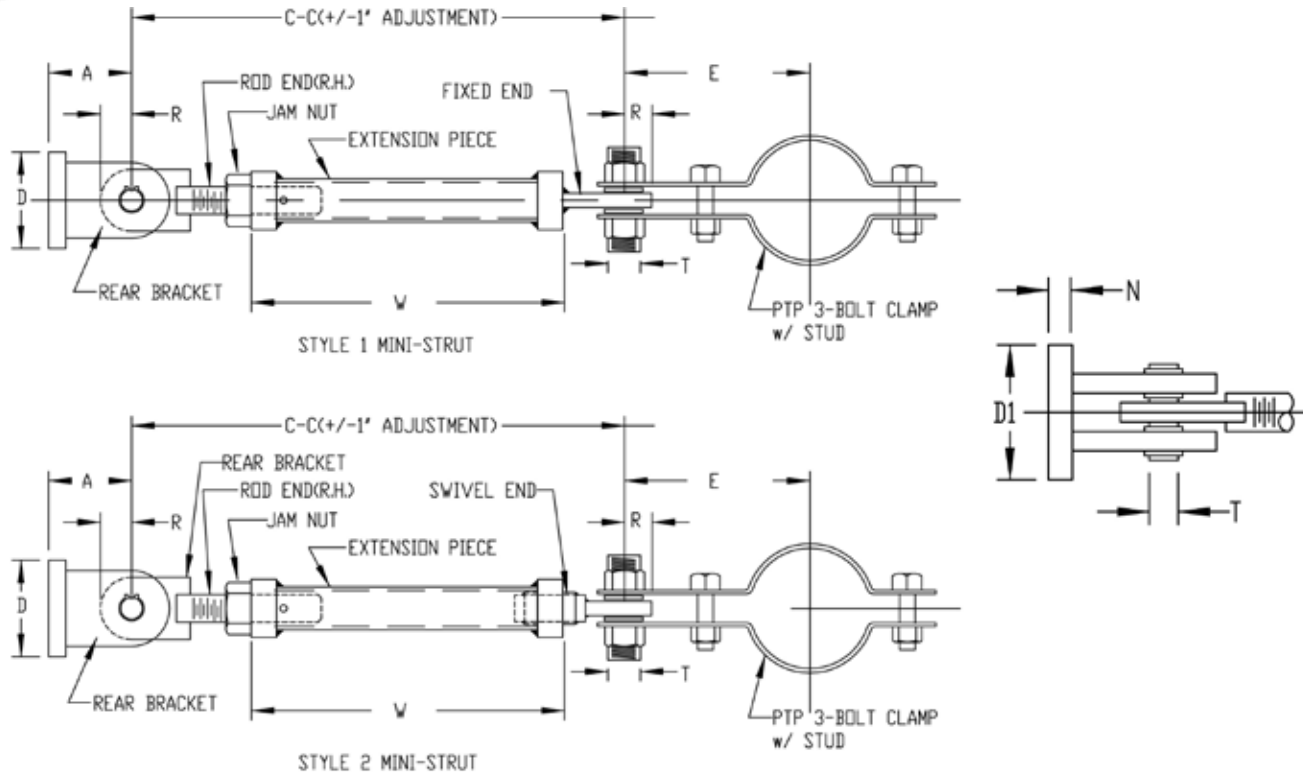


## FIG. 2120

## MINI SWAY STRUT

ENGINEERED SPRING SUPPORTS

[www.pipingtech.com/fig2120](http://www.pipingtech.com/fig2120)



OPTION \*1\* AS SHOWN WITH CLAMP; OPTION \*2\* PROVIDED WITH TWO END BRACKETS

**ORDERING:** Specify size, figure number, description, nominal pipe size or special O.D. and C-to-C dimension.

SIZE	LOAD	ROD END	EXT. PIECE PIPE SIZE	A	C-C (Style 1)		C-C (Style 2)		D	D1	N	R	S	T
					MIN.	MAX.	MIN.	MAX.						
A	650	3/4	1" SCH.80	1 1/2	8 1/8	9 3/4	9 5/8	18 3/4	1 5/8	1 3/4	1/4	1	3/4	0.499 0.497
B	1,500	1	1 1/2" SCH.40	2 3/8	9 3/4	11 1/2	11 1/2	20 1/2	2 1/4	2 7/8	3/8	1 1/8	1 1/8	0.749 0.747
C	4,500	1	2" SCH.40	2 3/4	10	12	11 1/2	20 1/2	2 1/2	3 3/8	1/2	1 1/2	1 1/8	0.749 0.747
1	8,000	1 1/4	2" SCH.160	3 3/4	11 1/8	13 1/4	13 1/8	24	3	4 3/8	3/4	1 3/4	1 3/8	0.999 0.997
2	11,630	1 1/2	2 1/2" SCH.160	3	11 3/4	14 1/2	14 1/4	25	3 1/2	5 3/8	3/4	1 3/4	1 1/2	0.999 0.997
3	15,700	1 3/4	2 1/2" SCH.160	5 5/16	13 3/8	16	15 7/8	25 1/2	5 7/16	4 11/16	1	2	1 13/16	1.249 1.247
4	20,700	2	3" SCH.160	5 5/16	15 1/2	19	18 1/2	29 1/2	5 7/16	4 11/16	1	2 1/2	1 13/16	1.249 1.247
5	27,200	2 1/4	3" SCH.160	6	16 7/8	20 1/2	20 3/8	32 1/2	5 9/16	6	1 1/4	2 1/2	2 1/8	1.499 1.497
6	33,500	2 1/2	4" SCH.160	6 3/4	18 1/4	23	22 1/4	35 1/2	6 1/8	6 9/16	1 3/4	3	2 3/16	1.749 1.747
7	68,200	3	4" SCH.160	6	20	24	24	38 1/2	7 1/8	5 3/4	2	3 1/2	2 3/8	1.999 1.997

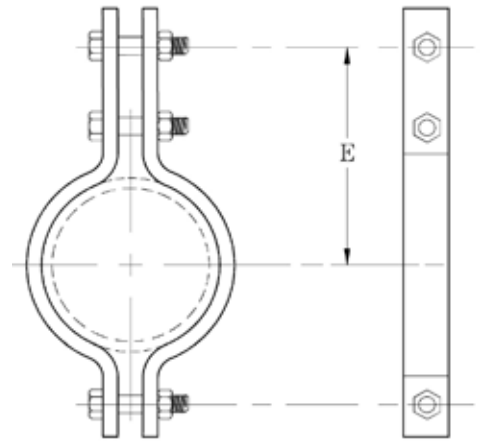
\* All struts provided with +/- 1" adjustment from specified C-C dimension



## FIG. 2110 & 2120

## SWAY STRUT ASSEMBLIES

[www.pipingtech.com/ssa-takeout](http://www.pipingtech.com/ssa-takeout)



THREE BOLT CLAMP FOR SWAY STRUT ASSEMBLIES

### E-TAKEOUT FOR SWAY STRUT ASSEMBLIES

PIPE SIZE	A	B	C	1	2	3	4	5	6	7
3/4	2 7/16									
1	2 9/16									
1 1/4	2 11/16									
1 1/2	4 1/8	4 1/8								
2	5 1/8	5 1/8								
2 1/2	5 3/8	5 3/8								
3	5 15/16	5 15/16								
4	6 1/2	6 1/2	8 5/8	10 1/8	12 1/4	13 1/2	16 1/4			
5	7	7	9 7/16	10 15/16	12 13/16	14 5/16	16 13/16			
6	8 9/16	8 9/16	9 15/16	11 7/16	13 5/16	14 13/16	17 5/16	18 9/16	20 5/16	
8	9 9/16	9 9/16	10 1/8	12 7/16	14 9/16	15 13/16	18 5/16	20 1/16	21 5/16	
10	10 5/8	10 5/8	11 3/8	13 3/4	15 5/8	16 7/8	19 7/8	21 1/8	22 3/8	
12	11 5/8	11 5/8	12 9/16	14 3/4	16 5/8	18 3/8	20 7/8	22 1/8	23 3/8	
14	12 11/16	12 11/16	13 1/2	13 1/2	17 1/4	19	21 1/2	22 3/4	24 1/2	30
16	13 11/16	13 11/16	14 7/8	14 7/8	18 3/4	20	22 1/2	23 3/4	25 1/2	31
18	14 11/16	14 11/16	16 1/4	16 1/4	16 1/4	21	23 1/2	25 1/4	27	32
20	15 7/8	15 7/8	15 7/8	17 1/4	17 1/4	22	24 1/2	26 1/4	28	33 1/2
24	17 7/8	17 7/8	17 7/8	19 5/16	19 5/16	19 5/16	27	28 3/4	30	36
30	23 3/8	23 3/8	23 3/8	28 1/4	28 1/4	28 1/4	30 1/2	31 3/4	33	39
36	28 3/4	28 3/4	28 3/4	28 3/4	34 3/4	34 3/4	34 3/4	34 3/4	36	42