

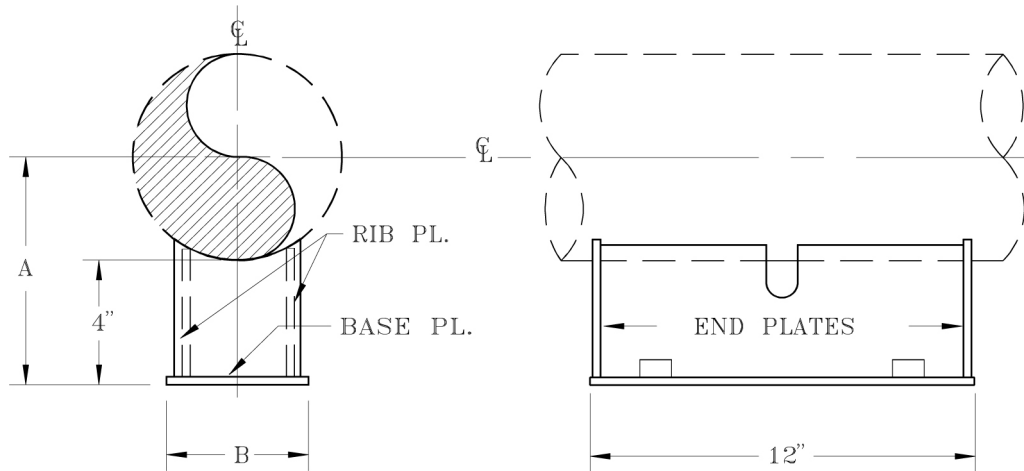


FIG. 400

DOUBLE T-BAR CRADLE SUPPORT & STRUCTURAL ANCHOR CRADLED NON-GUIDED SUPPORT

www.pipingtech.com/fig400

- MATERIAL:** Carbon steel
- FINISH:** Painted or hot dipped galvanized.
- OPTIONS:** Modifications in the dimensions A, B, C, D, and the slide plate material (PTFE, 25% glass filled or graphite) available upon request.
- ORDERING:** Specify pipe size, figure number, description, type, quantity, finish and slide plate material.
- ALLOWABLE LOADS:** The allowable vertical loads depend upon the pipe pressure and wall thickness.



PIPE SIZE	A	B	MAX. ANCHOR FORCE (lb.)	APPROX. WEIGHT (lb. per each)
6	7 5/16	4	11,000	13.0
8	8 5/16	5 1/2	19,000	21.0
10	9 3/8	6 1/2	19,000	23.0
12	10 3/8	7 1/2	19,000	25.0
14	11	8 1/2	19,000	26.0
16	12	10	26,000	28.0
18	13	11	26,000	38.0
20	14	12	26,000	40.0
24	16	14 1/4	35,000	57.0
30	19	17 1/2	42,000	77.0
36	22	20 1/2	42,000	87.0
42	25	23 1/2	42,000	100.0

PIPESH0ES01.XLS-07/17/09