

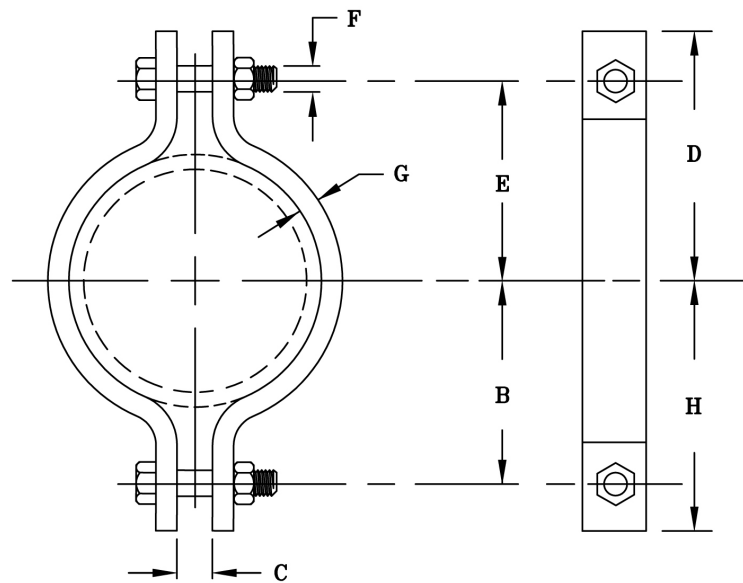


## FIG. 50

## LIGHT TWO-BOLT PIPE CLAMP

[www.pipingtech.com/fig50](http://www.pipingtech.com/fig50)

- SIZE RANGE:** ½" thru 36"
- MATERIAL:** Carbon steel
- FINISH:** Black or galvanized; furnished black unless otherwise specified.
- SERVICE:** Recommended for suspension of cold pipe lines or hot lines where little or no insulation is required.
- MAX. TEMP.:** 750 °F
- ORDERING:** Specify pipe size, figure number, description and finish.



SUPPORT ASSEMBLY COMPONENTS

PIPE SIZE	MAX. RECOM. LOAD (lb.)		B	C	D	E	F	STOCK SIZE		APPROX. WEIGHT (lb. per each)
	@ 650 °F	@ 750 °F						G	H	
1/2	500	445	1	1/2	1 17/32	1	5/16	1/8 x 1	1 17/32	0.29
3/4	500	445	1 1/8	1/2	1 21/32	1 1/8	5/16	1/8 x 1	1 21/32	0.33
1	500	445	1 1/8	1/2	1 29/32	1 3/8	5/16	1/8 x 1	1 21/32	0.35
1 1/4	500	445	1 7/16	1/2	1 31/32	1 7/16	5/16	1/8 x 1	1 31/32	0.37
1 1/2	800	715	1 9/16	1/2	2 5/32	1 5/8	5/16	1/8 x 1	2 3/32	0.43
2	1,040	930	2 1/8	1/2	2 3/4	2 1/8	1/2	1/4 x 1	2 3/4	1.10
2 1/2	1,040	930	2 1/2	5/8	3 1/4	2 5/8	1/2	1/4 x 1	3 1/8	1.20
3	1,040	930	2 13/16	5/8	3 9/16	2 15/16	1/2	1/4 x 1	3 7/16	1.40
3 1/2	1,040	930	3 1/8	5/8	3 13/16	3 3/16	1/2	1/4 x 1	3 3/4	1.50
4	1,040	930	3 7/16	3/4	4 3/8	3 5/8	5/8	1/4 x 1 1/4	4 3/16	2.30
5	1,040	930	4	3/4	4 15/16	4 3/16	5/8	1/4 x 1 1/4	4 3/4	2.60
6	1,615	1,440	4 7/8	7/8	5 7/8	5	3/4	3/8 x 1 1/2	5 3/4	5.40
8	1,615	1,440	6	1	7	6 1/8	3/4	3/8 x 1 1/2	6 7/8	6.50
10	2,490	2,220	7 5/16	1	8 9/16	7 7/16	7/8	1/2 x 2	8 7/16	13.60
12	2,490	2,220	8 1/4	1	9 9/16	8 7/16	7/8	1/2 x 2	9 3/8	15.20
14	2,490	2,220	9	1 1/8	10 5/8	9 1/4	7/8	1/2 x 2 1/2	10 3/8	20.50
16	2,490	2,220	10	1 1/8	11 5/8	10 1/4	7/8	1/2 x 2 1/2	11 3/8	22.30
18	3,060	2,730	11 1/2	1 1/4	13	11 5/8	1	5/8 x 2 1/2	12 7/8	31.60
20	3,060	2,730	12 1/2	1 3/8	14 1/8	12 3/4	1 1/8	5/8 x 2 1/2	13 7/8	35.80
24	3,060	2,730	15	1 5/8	16 7/8	15 1/4	1 1/4	5/8 x 3	16 5/8	53.10
30	3,500	3,360	18 1/4	2	21 1/4	19	1 3/4	3/4 x 4	20 5/8	113.90
36	4,000	3,570	22 1/2	2 1/2	25 1/2	23	2	1 x 5	25	219.00