

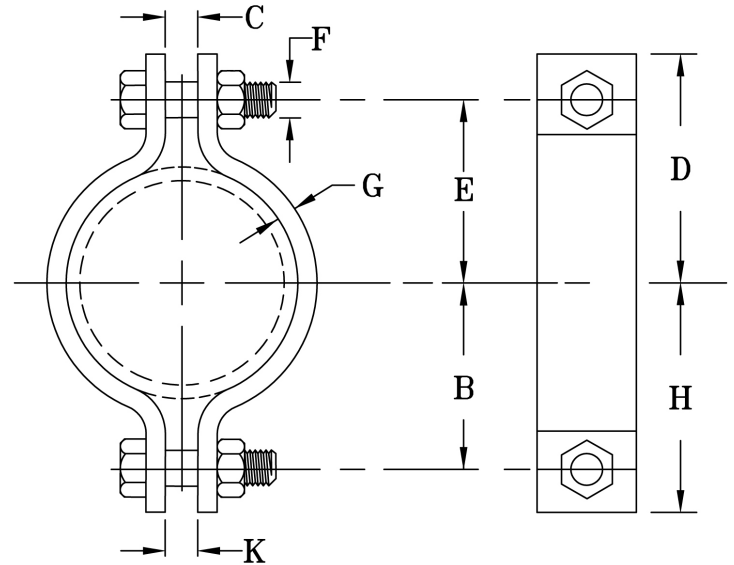


## FIG. 60

## HEAVY TWO-BOLT PIPE CLAMP

[www.pipingtech.com/fig60](http://www.pipingtech.com/fig60)

- SIZE RANGE:** 3" thru 36"
- MATERIAL:** Carbon steel
- FINISH:** Black or galvanized; furnished black unless otherwise specified.
- SERVICE:** Recommended for suspension of cold or hot pipe lines with heavy load having little or no insulation.
- MAX. TEMP.:** 750 °F
- ORDERING:** Specify pipe size, figure number, description and finish.



SUPPORT ASSEMBLY COMPONENTS

PIPE SIZE	MAX. RECOM. LOAD (lb.)		B	C	D	E	F	STOCK SIZE G	H	K	APPROX. WEIGHT (lb. per each)
	@ 650 °F	@ 750 °F									
3	3,370	3,005	2 15/16	1	4	3 1/8	3/4	5/16 x 2	3 13/16	5/8	3.60
3 1/2	3,370	3,005	3 1/4	1	4 1/4	3 3/8	3/4	5/16 x 2	3 13/16	5/8	3.90
4	3,515	3,135	3 9/16	1	4 7/8	3 3/4	7/8	3/8 x 2	4 11/16	5/8	5.50
5	3,515	3,135	4 1/8	1	5 1/2	4 3/8	7/8	3/8 x 2	5 1/4	5/8	6.30
6	4,865	4,340	5	1 1/8	6 5/8	5 1/4	1	1/2 x 2 1/2	6 3/8	7/8	11.70
8	4,865	4,340	6 1/8	1 1/8	7 5/8	6 1/4	1	1/2 x 2 1/2	7 1/2	7/8	13.90
10	6,010	5,360	7 9/16	1 1/4	9 1/16	7 11/16	1 1/4	5/8 x 2 1/2	8 5/16	7/8	22.30
12	8,675	7,740	9	1 5/8	10 7/8	9 1/4	1 1/2	3/4 x 3	10 5/8	7/8	38.10
14	9,120	8,135	9 3/4	1 5/8	11 7/8	10	1 1/2	3/4 x 4	11 5/8	7/8	46.80
16	9,120	8,135	10 3/4	1 5/8	12 7/8	11	1 1/2	3/4 x 4	12 5/8	7/8	51.40
18	13,800	12,305	14 1/2	3	17 1/4	14 1/2	2	3/4 x 6	17 1/4	3	130.10
20	15,300	13,645	16	3	18 3/4	16	2	1 x 5	18 3/4	3	163.60
24	16,300	14,535	18 1/2	3 1/4	21 1/2	18 1/2	2 1/4	1 x 6	21 1/2	3 1/4	215.00
28	18,000	16,055	20 1/2	3 1/4	23 1/2	20 1/2	2 1/4	1 x 8	23 1/2	3 1/4	303.00
30	20,500	18,285	22 1/2	3 1/2	26	22 1/2	2 1/2	1 1/4 x 7	26	3 1/2	365.40
32	23,750	21,180	23 1/2	3 1/2	27	23 1/2	2 1/2	1 1/4 x 8	27	3 1/2	432.00
34	25,000	22,295	25	3 1/2	28 1/2	25	2 1/2	1 1/2 x 8	28 1/2	3 1/2	534.00
36	28,000	24,975	26 1/2	3 1/2	30 1/4	26 1/2	2 3/4	1 1/2 x 8	33 3/4	3 1/2	575.00

SCOMPONENTS01.XLS-07/01/09