



## FIG. 70

## LIGHT THREE-BOLT PIPE CLAMP

www.pipingtech.com/fig70

**SIZE RANGE:** 1/2" thru 36"

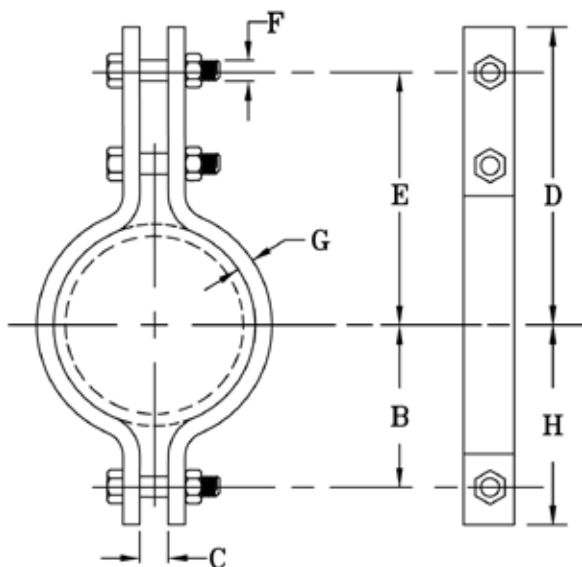
**MATERIAL:** Carbon steel

**FINISH:** Black or galvanized; furnished black unless otherwise specified.

**SERVICE:** Recommended for suspension of cold or hot pipe lines where little or no insulation is required.

**MAX. TEMP.:** 750 °F

**ORDERING:** Specify pipe size, figure number, description and finish.



SUPPORT ASSEMBLY COMPONENTS

PIPE SIZE	MAX. RECOM. LOAD (lb.)		B	C	D	E	F	G	H	APPROX. WEIGHT (lb. per each)
	@ 650 °F	@ 750 °F								
1/2	950	850	15/16	5/16	2 7/8	2 7/16	3/8	3/16 x 1	1 3/8	0.66
3/4	950	850	15/16	5/8	2 7/8	2 7/16	3/8	3/16 x 1	1 3/8	0.70
1	950	850	1 1/16	5/8	3	2 9/16	3/8	3/16 x 1	1 1/2	0.76
1 1/4	950	850	1 1/4	5/8	3 1/8	2 11/16	3/8	3/16 x 1	1 11/16	0.81
1 1/2	1,545	1,380	1 13/16	1 1/16	4 7/8	4 1/8	5/8	1/4 x 1 1/4	2 3/8	2.30
2	1,545	1,380	2 1/8	1 1/16	5 7/8	5 1/8	5/8	1/4 x 1 1/4	2 11/16	2.60
2 1/2	1,545	1,380	2 5/16	1 1/16	6 1/8	5 3/8	5/8	1/4 x 1 1/4	2 15/16	2.70
3	1,545	1,380	2 3/4	1 1/16	6 11/16	5 15/16	5/8	1/4 x 1 1/4	3 1/2	3.00
4	2,500	2,230	3 3/8	1 1/16	7 5/8	6 1/2	3/4	5/16 x 2	4 1/2	6.70
5	2,500	2,230	3 15/16	1 1/16	8 1/8	7	3/4	5/16 x 2	5	7.00
6	2,865	2,555	4 3/4	1 7/16	9 11/16	8 9/16	7/8	3/8 x 2 1/2	6 1/8	11.50
8	2,865	2,555	5 3/4	1 7/16	10 11/16	9 9/16	7/8	3/8 x 2 1/2	7 1/8	13.20
10	3,240	2,890	6 7/8	1 7/16	12	10 5/8	1	1/2 x 2 1/2	8 1/4	19.80
12	3,240	2,890	7 7/8	1 7/16	13	11 5/8	1	1/2 x 2 1/2	9 1/4	22.30
14	4,300	3,835	9 1/16	2	14 5/16	12 11/16	1 1/4	5/8 x 3	10 11/16	37.70
16	4,300	3,835	10 1/16	2	15 5/16	13 11/16	1 1/4	5/8 x 3	11 11/16	41.40
18	4,300	3,835	11 1/16	2	16 5/16	14 11/16	1 1/4	5/8 x 3	12 11/16	44.90
20	4,500	4,015	12 3/8	2	17 5/8	15 7/8	1 1/2	3/4 x 3	14	57.30
24	4,500	4,015	14 3/8	2	19 5/8	17 7/8	1 1/2	3/4 x 3	16	65.90
28	6,000	5,340	17 1/2	2 1/4	24 1/4	21 3/4	1 1/2	3/4 x 4	20	112.30
30	7,500	6,675	18 1/2	2 1/2	26 1/8	23 3/8	1 1/2	3/4 x 5	21 1/4	150.00
36	10,500	9,345	22 1/2	3	32 1/4	28 3/4	1 3/4	1 x 5	26	257.50