

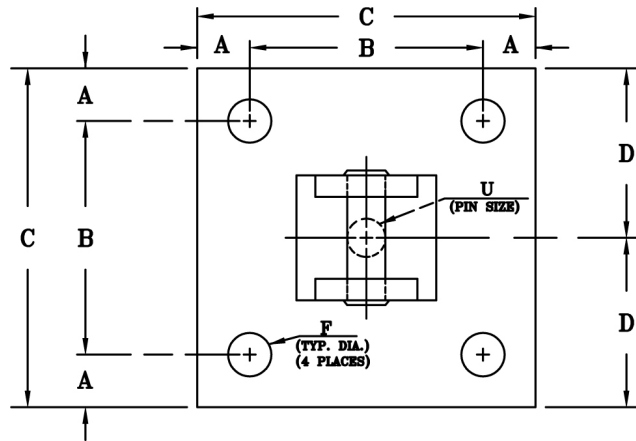
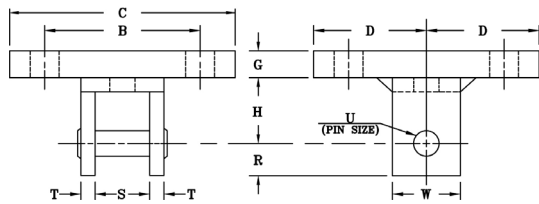


FIG. 73

CONCRETE CLEVIS PLATE

www.pipingtech.com/fig73

- MATERIAL:** Carbon steel
- SIZE:** Rod sizes 3/8" thru 2"
- FINISH:** Black or galvanized; furnished black unless otherwise specified.
- SERVICE:** Attachment for concrete ceiling.
- ORDERING:** Specify rod size, figure number, description and finish.



| ROD SIZE | MAX. RECOM. LOAD (lb.) | A | B | C | D | F | G | H | R | S | T | U | W | APPROX. WEIGHT (lb. per each) |
|----------|------------------------|---|----|----|---|-------|-------|---|-------|-------|-----|-------|-------|-------------------------------|
| 3/8 | 730 | 1 | 8 | 10 | 5 | 9/16 | 3/8 | 2 | 7/8 | 1 1/4 | 1/4 | 1/2 | 2 | 11.8 |
| 1/2 | 1,350 | 1 | 8 | 10 | 5 | 9/16 | 3/8 | 2 | 7/8 | 1 1/4 | 1/4 | 5/8 | 2 | 11.9 |
| 5/8 | 2,160 | 1 | 8 | 10 | 5 | 9/16 | 1/2 | 2 | 1 | 1 1/4 | 1/4 | 3/4 | 2 | 15.7 |
| 3/4 | 3,230 | 1 | 8 | 10 | 5 | 11/16 | 1/2 | 2 | 1 1/8 | 1 1/2 | 3/8 | 7/8 | 2 1/2 | 16.9 |
| 7/8 | 4,480 | 1 | 8 | 10 | 5 | 11/16 | 1/2 | 3 | 1 1/4 | 2 | 3/8 | 1 | 2 1/2 | 18.1 |
| 1 | 5,900 | 2 | 8 | 12 | 6 | 13/16 | 3/4 | 3 | 1 1/2 | 2 | 1/2 | 1 1/8 | 3 | 36.9 |
| 1 1/4 | 9,500 | 2 | 8 | 12 | 6 | 15/16 | 3/4 | 3 | 2 | 2 1/2 | 5/8 | 1 3/8 | 4 | 40.9 |
| 1 1/2 | 13,800 | 2 | 8 | 12 | 6 | 1 1/8 | 1 | 4 | 2 1/2 | 3 | 3/4 | 1 5/8 | 5 | 59.8 |
| 1 3/4 | 18,600 | 2 | 10 | 14 | 7 | 1 3/8 | 1 1/4 | 5 | 2 3/4 | 3 3/4 | 3/4 | 1 7/8 | 5 | 93.6 |
| 2 | 20,700 | 2 | 10 | 14 | 7 | 1 3/8 | 1 1/4 | 5 | 3 1/4 | 3 3/4 | 3/4 | 2 1/4 | 6 | 100.0 |

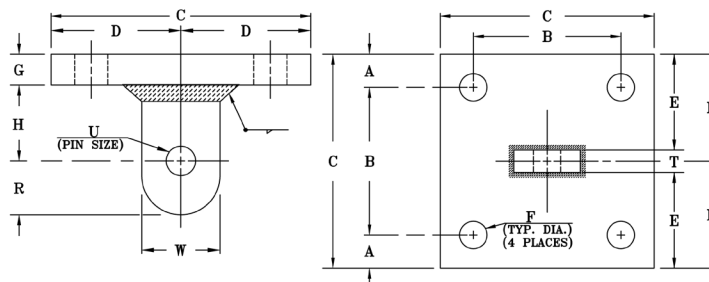
SCOMPONENTS03.XLS-07/01/09

FIG. 74

CONCRETE SINGLE LUG PLATE

www.pipingtech.com/fig74

- MATERIAL:** Carbon steel
- SIZE:** Rod sizes 1/2" thru 2"
- FINISH:** Black or galvanized; furnished black unless otherwise specified.
- SERVICE:** Structural attachment for concrete ceiling. Lug is used in conjunction with Fig. 95 (Forged Steel Clevis).
- ORDERING:** Specify rod size, figure number, description and finish.



| ROD SIZE | MAX. RECOM. LOAD (lb.) | A | B | C | D | E | F | G | H | R | S | T | U | W | APPROX. WEIGHT (lb. per each) |
|----------|------------------------|---|---|----|---|---------|-------|-------|-------|-------|-----|-----|-------|-------|-------------------------------|
| 1/2 | 1,350 | 1 | 8 | 10 | 5 | 4 7/8 | 9/16 | 3/8 | 1 1/2 | 1 1/4 | 1/4 | 1/4 | 5/8 | 2 1/2 | 11.1 |
| 5/8 | 2,160 | 1 | 8 | 10 | 5 | 4 7/8 | 9/16 | 1/2 | 1 1/2 | 1 1/4 | 1/4 | 1/4 | 3/4 | 2 1/2 | 14.6 |
| 3/4 | 3,230 | 1 | 8 | 10 | 5 | 4 13/16 | 11/16 | 1/2 | 1 1/2 | 1 1/4 | 3/8 | 3/8 | 7/8 | 2 1/2 | 14.8 |
| 7/8 | 4,480 | 1 | 8 | 10 | 5 | 4 13/16 | 11/16 | 3/4 | 2 | 1 1/4 | 3/8 | 3/8 | 1 | 2 1/2 | 22.0 |
| 1 | 5,900 | 2 | 8 | 12 | 6 | 5 3/4 | 13/16 | 3/4 | 2 | 1 1/2 | 1/2 | 1/2 | 1 1/8 | 3 | 31.9 |
| 1 1/4 | 9,500 | 2 | 8 | 12 | 6 | 5 11/16 | 15/16 | 1 | 3 | 2 | 5/8 | 5/8 | 1 3/8 | 4 | 43.8 |
| 1 1/2 | 13,800 | 2 | 8 | 12 | 6 | 5 5/8 | 1 1/8 | 1 | 3 | 2 1/2 | 3/4 | 3/4 | 1 5/8 | 5 | 45.6 |
| 1 3/4 | 18,600 | 2 | 8 | 12 | 6 | 5 5/8 | 1 3/8 | 1 1/4 | 3 | 2 1/2 | 3/4 | 3/4 | 1 7/8 | 5 | 55.7 |
| 2 | 24,600 | 2 | 8 | 12 | 6 | 5 5/8 | 1 3/8 | 1 1/4 | 4 | 3 | 3/4 | 3/4 | 2 1/4 | 6 | 58.2 |

SCOMPONENTS03.XLS-07/01/09