

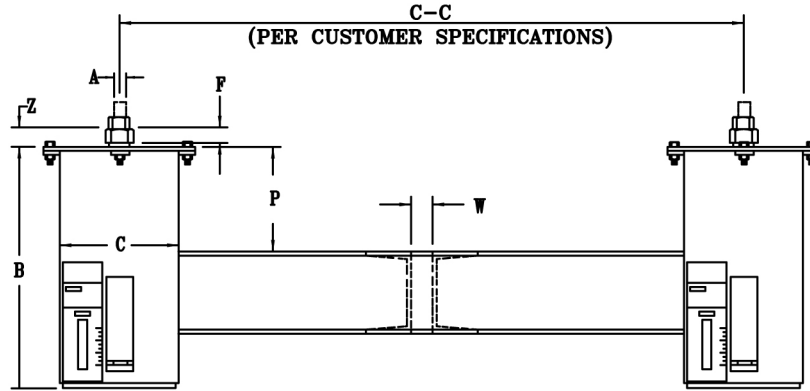


## FIG. PTP-8

## QUADRUPLE VARIABLE SPRINGS

www.pipingtech.com/ptp8-g

TYPE G



**ORDERING:** Specify size, figure number, description, type, operating load and calculated amount and direction of pipe movement from installed to operating position. Please specify any non-standard requirements, i.e. internally guided load column, jacking bolt, lifting lugs, etc.

HANGER SIZE	TYPE G											
	APPROX. WEIGHT	ROD SIZE	CASING LENGTH	CASING DIA.	MIN. THREAD ENGAGEMENT	MAX. PIPE SIZE	MAX. C-C DIM.	CHANNEL SIZE	SPACING BETWEEN CHANNELS			
	lb.	A	B	C	F				W	P	Z	
00	70	1/2	25 1/4	4	7/8	12	24	C3 x 4.1	5/8	1 1/2	3	
10	78	1/2	28 3/4	4	7/8	12	24	C3 x 4.1	5/8	1 1/2	3	
20	86	1/2	31 3/4	4	7/8	12	24	C3 x 4.1	5/8	1 1/2	3	
30	102	1/2	27 3/4	5 9/16	7/8	16	30	C3 x 4.1	3/4	2	3	
40	114	1/2	30 1/4	5 9/16	7/8	16	30	C3 x 4.1	3/4	2	3	
50	122	1/2	33	5 9/16	7/8	16	30	C3 x 4.1	3/4	2	3	
60	174	5/8	32 3/4	6 5/8	1 1/16	20	36	C3 x 4.1	1	2	3 1/4	
70	206	5/8	36 3/8	6 5/8	1 1/16	20	36	C3 x 4.1	1	2	3 1/4	
80	254	5/8	38 3/8	6 5/8	1 1/16	20	36	C3 x 4.1	1	2	3 1/4	
90	374	3/4	38 1/8	8 5/8	1 5/16	20	36	C4 x 5.4	1 1/4	3	3 1/4	
100	442	3/4	42 7/8	8 5/8	1 5/16	20	36	C4 x 5.4	1 1/4	3	2 1/4	
110	378	3/4	34 1/8	8 5/8	1 5/16	20	36	C4 x 5.4	1 1/4	3	3 3/4	
120	426	1	36 3/4	8 5/8	1 9/16	20	36	C5 x 6.7	1 1/2	4	3 15/16	
130	570	1	46 3/4	8 5/8	1 3/4	20	36	C5 x 6.7	1 1/2	4	3 3/8	
140	606	1 1/4	47 3/4	8 5/8	1 3/4	16	33	C5 x 6.7	1 1/2	4	3 5/8	
150	684	1 1/4	47 3/4	8 5/8	1 7/8	20	36	C6 x 10.5	2 1/8	4	5 5/8	
160	868	1 1/2	56 7/8	8 5/8	2 3/16	20	36	C8 x 11.5	2 1/8	4	3 11/16	
170	1,088	1 3/4	65 1/4	8 5/8	2 7/16	20	36	C8 x 11.5	2 1/8	4	3 15/16	
180	1,992	2	64 3/8	12 3/4	2 13/16	20	42	C12 x 20.7	2 3/8	4	4 15/16	
190	2,342	2 1/4	73 3/8	12 3/4	3 1/16	20	42	C12 x 20.7	2 5/8	4	5 3/16	
200	3,140	2 1/2	86 7/8	12 3/4	3 5/16	20	40	C12 x 20.7	2 7/8	4	4 15/16	
210	3,810	2 3/4	96 1/8	12 3/4	3 11/16	24	48	C15 x 33.9	3 1/8	4	5 7/16	
220	5,012	3	120 3/8	12 3/4	3 15/16	24	48	C15 x 33.9	3 3/8	4	5 11/16	

SPRING.XLS-09/17/09