

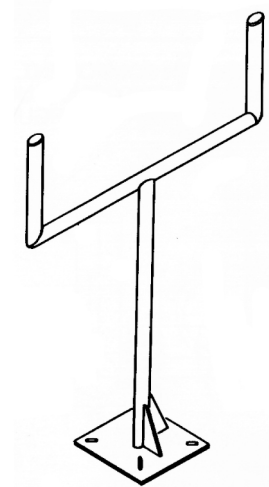


INSTRUMENT SUPPORTS

PT&P offers a complete line of adjustable instrument support components which, when combined, will create various configurations to your exact requirements or individual needs. We also provide welded instrument supports fabricated according to your specifications.



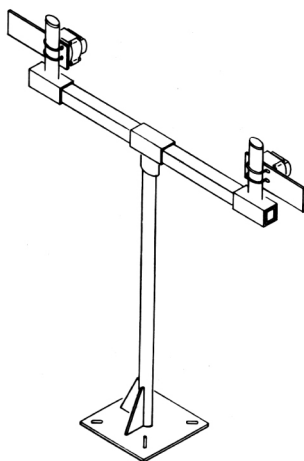
WELDED INSTRUMENT SUPPORTS READY FOR SHIPMENT



WELDED INSTRUMENT SUPPORT



INSTRUMENT SUPPORTS READY FOR FINAL INSPECTION

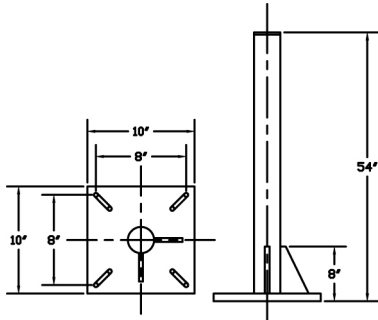


ADJUSTABLE INSTRUMENT SUPPORT



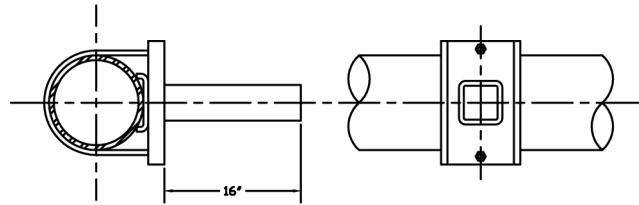
ADJUSTABLE INSTRUMENT SUPPORTS COMPONENTS

Primary support components are available in various mount styles, including floor mounts, wall mounts, u-bolt mounts, and cable mounts. These primary mounts can be used independently or together with secondary components to construct various packages for individual needs.



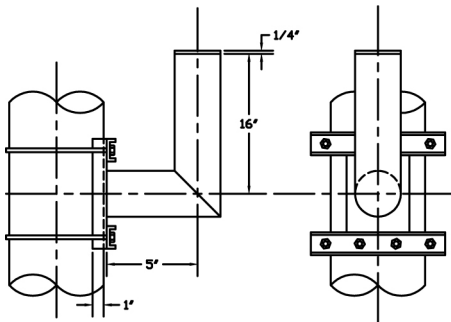
PTP-IS-600

Primary component has a 2" pipe extension 54" long, designed for grade mounting of instrument assemblies, comes with slotted hole in base.



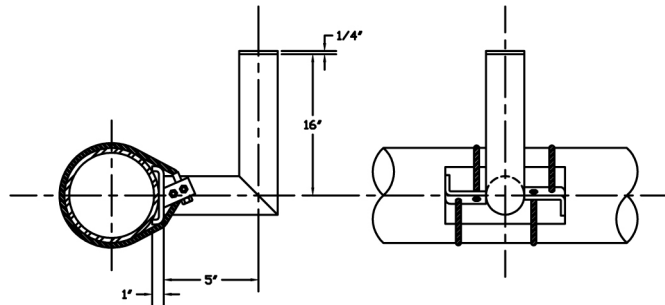
PTP-IS-610

Primary component has a 2" square extension 16" long, designed for mounting on vertical or horizontal lines.



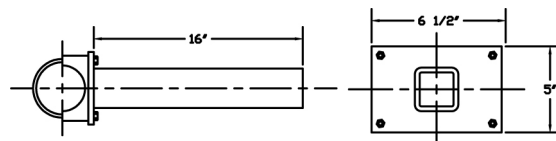
PTP-IS-620

Primary component has a 2" pipe, at a right angle with a vertical leg, designed for mounting on vertical lines.



PTP-IS-630

Primary component has a 2" pipe, at a right angle with a vertical leg, designed for mounting on horizontal lines.



PTP-IS-660

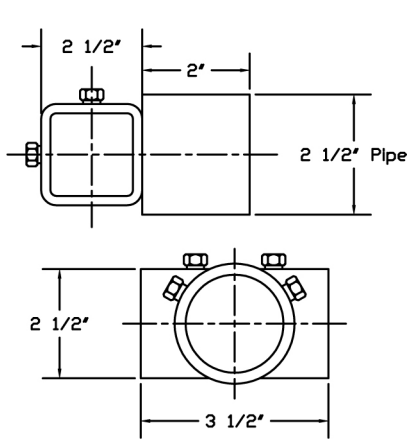
2" square extension component, 16" long, with 2" u-bolt mount, for constructing various instrument support configurations.



ADJUSTABLE INSTRUMENT SUPPORTS COMPONENTS

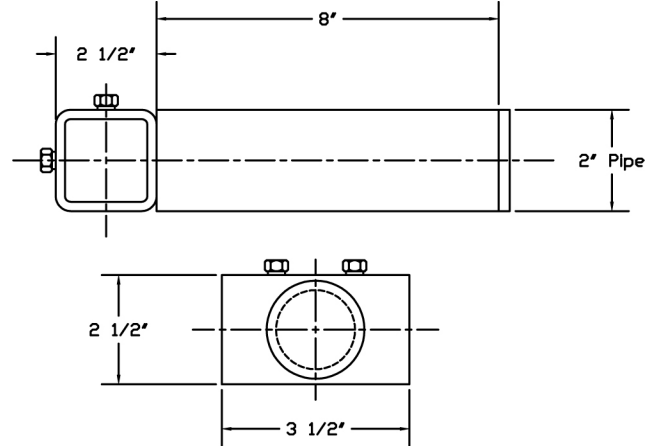
Note:

The extension lengths shown on primary components are standard, other lengths can be furnished on request.



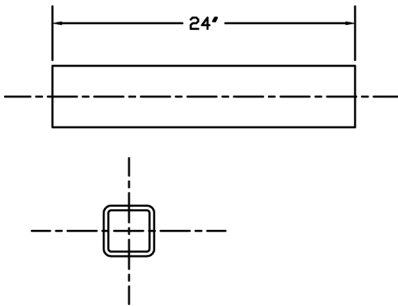
PTP-IS-640

Female adaptor with two 2" extension 2" long, provides female connection to 2" pipe components, used for constructing multiple instrument support systems.



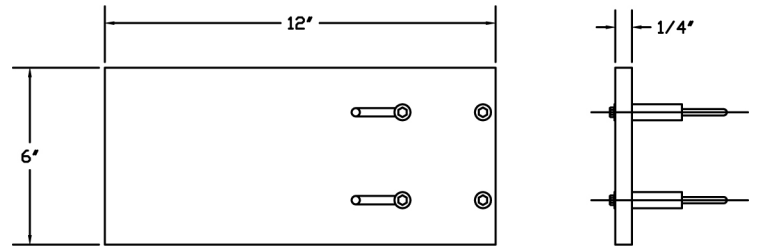
PTP-IS-650

Adaptor with 2" pipe extension 8" long.



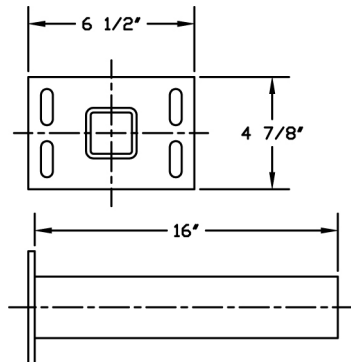
PTP-IS-670

2" square component, 24" long designed for use in constructing multiple support mounts and other applicable configurations as required.



PTP-IS-680

Secondary component, with 2" u-bolt mount, provides auxiliary equipment mount and/or flag for identification.



PTP-IS-690

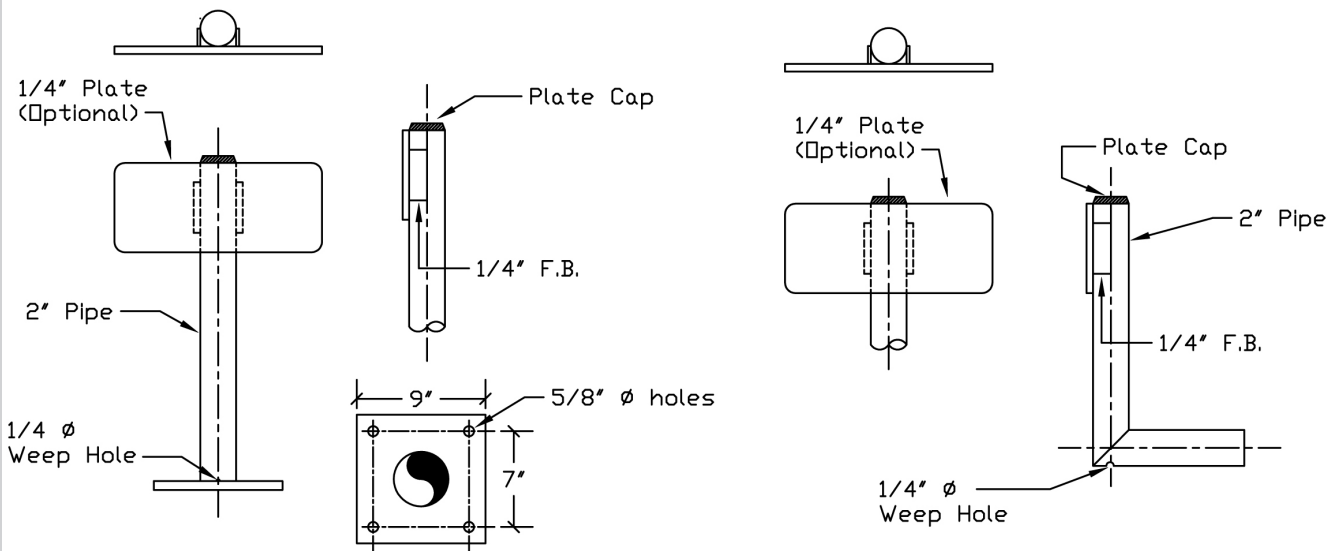
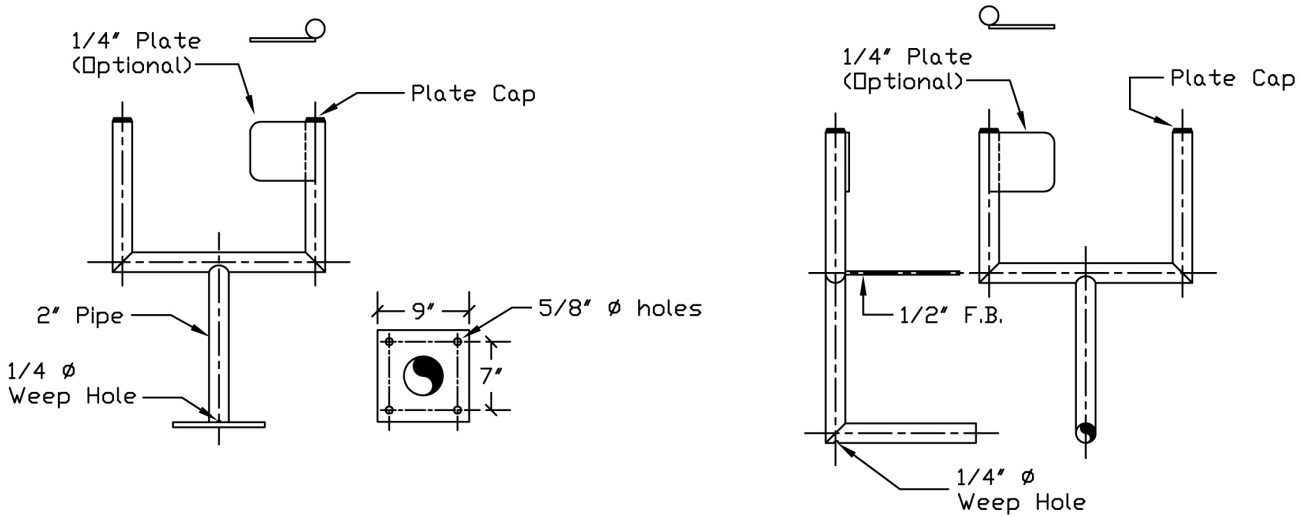
Primary component, 2" square extension 16" long, designed for mounting on walls and columns.



WELDED INSTRUMENT SUPPORTS

Welded instrument supports may be fabricated in any desired configuration according to customer's individual requirements and design specifications.

Examples of various welded instrument support configurations:



MISC. FABRICATED PRODUCTS & SERVICES